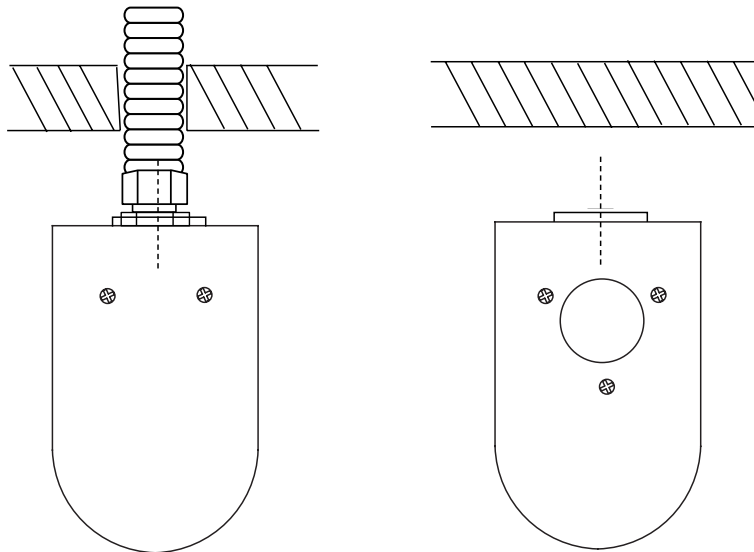


INSTRUCTION SHEET

Surface Mount

SURFACE MOUNT



BACK FEED VERSION

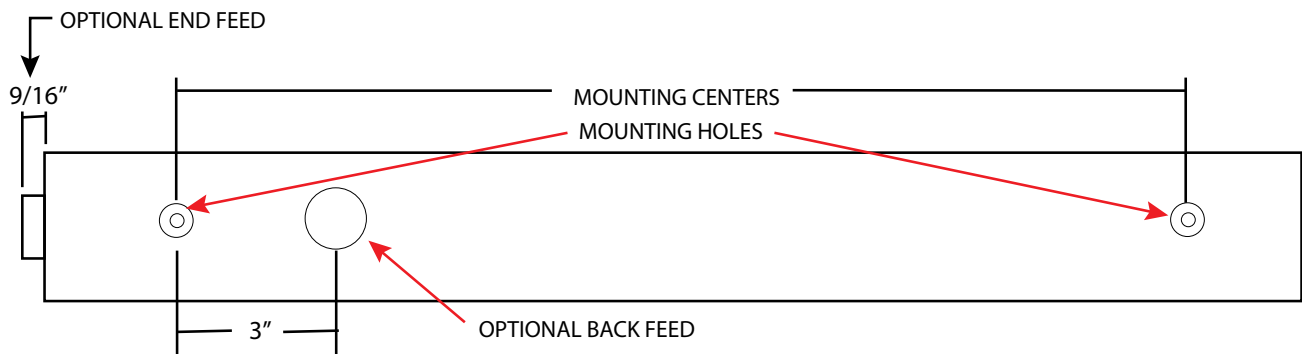
END FEED VERSION

LED	Mounting Centers
2'	18"
3'	24"
4'	36"
5'	48"
6'	60"
7'	72"
8'	84"

Lamp	Mounting Centers
T5 2'	18"
3'	24"
4'	36"
T8 2'	18"
3'	24"
4'	36"

Surface Mounting

1. Remove both end caps by unscrewing the stainless steel 10-32 screws.
2. Remove lens by squeezing one end of lens and pulling it away from housing.
3. Remove liner.
4. Mount the luminaire by using 1/4" screws (by others) through the mounting holes in bottom of the fixture. Ensure the supplied gaskets are between the fixture and the mounting surface. Use silicone sealant around mounting holes and gaskets to ensure a water tight seal.
5. Connect 1/2" trade size UL Wet Listed conduit fitting, (use appropriate sealant around threads to make sure water will not leak into fixture). Pass wires through conduit and fitting and make necessary electrical connections. *Note: for end feed fixtures, endcap must remain hanging on the end feed fitting when the conduit fitting is being connected.*
6. Replace liner and lens, making sure ends of the lens are lined up with the ends of the housing. *Note: firmly press along entire length of lens to ensure a good seal.*
7. Replace endcaps. *Note: Ensure endcap has fully compressed gasket. Tighten each screw by hand. Once the gasket starts to compress, alternate tightening each screw 1/4 turn until 18 in/lbs is achieved.*



Note: To be installed by a qualified electrician per N.E.C. and all local codes.

820-00134
V-0617