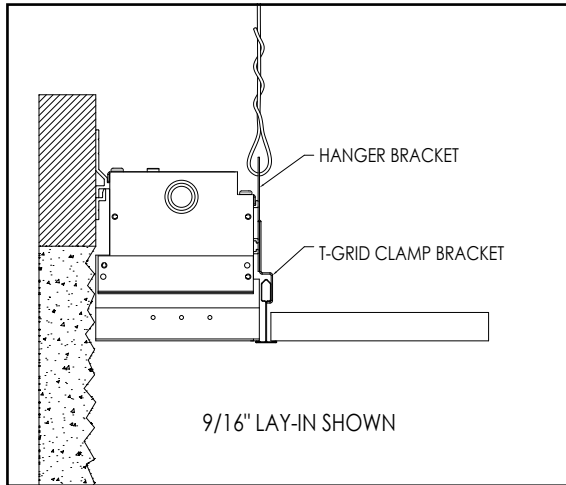


# INSTRUCTION SHEET

## Installation Guide/ Stand Alone



Notes before installation: wall should have blocking above finished wall to attach support rail and fixture. Blocking should be flush with high point of textured wall. Access to fixture above the ceiling is required.

1. Mark a chalk line for positioning the bottom edge of the support rail. Note: correct position is based on t-grid ceiling type.

2. Prepare support rail(s) by drilling 5/32" diameter holes 1" from each end and every 10"-12" in between.

**Note:** for continuous runs, position the seam between support rails in the middle of the fixture. If necessary, cut one support rail in half and use that half piece as the starter.

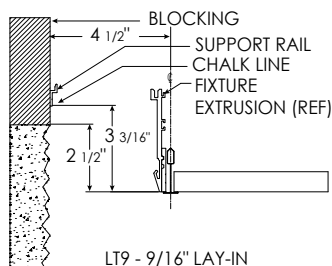
3 Prepare the fixture(s) by drilling 5/32" diameter holes on the tail of the fixture. Drill 1" from each end and every 10"-12" in between. Alternate between upper and lower drill points.

4. Remove driver cover and lightbar from fixture.

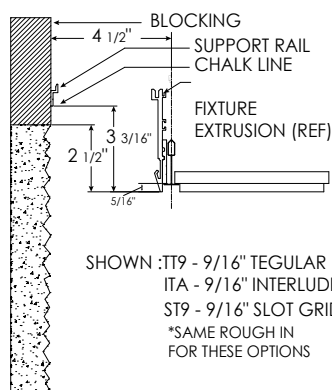
5. Mount support rail(s) to blocking with drywall screws.

6. Loosen nuts on T-Grid Clamp Bracket. Drop fixture into roughed opening to hang on support rail and t-grid, based on appropriate drawings to the left.

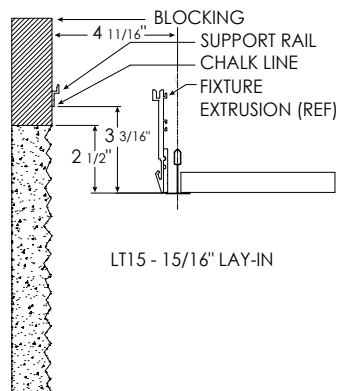
7. For stand alone fixtures skip to step 13. \*For continuous runs, install alignment splines in end of fixture (do not tighten setscrews yet).



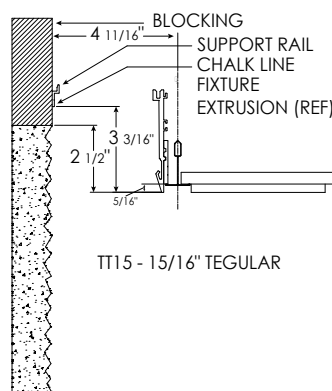
LT9 - 9/16" LAY-IN



SHOWN :TT9 - 9/16" TEGULAR  
ITA - 9/16" INTERLUDE  
ST9 - 9/16" SLOT GRID  
\*SAME ROUGH IN FOR THESE OPTIONS



LT15 - 15/16" LAY-IN



TT15 - 15/16" TEGULAR

**Note:** To be installed by a qualified electrician per N.E.C. and all local codes.

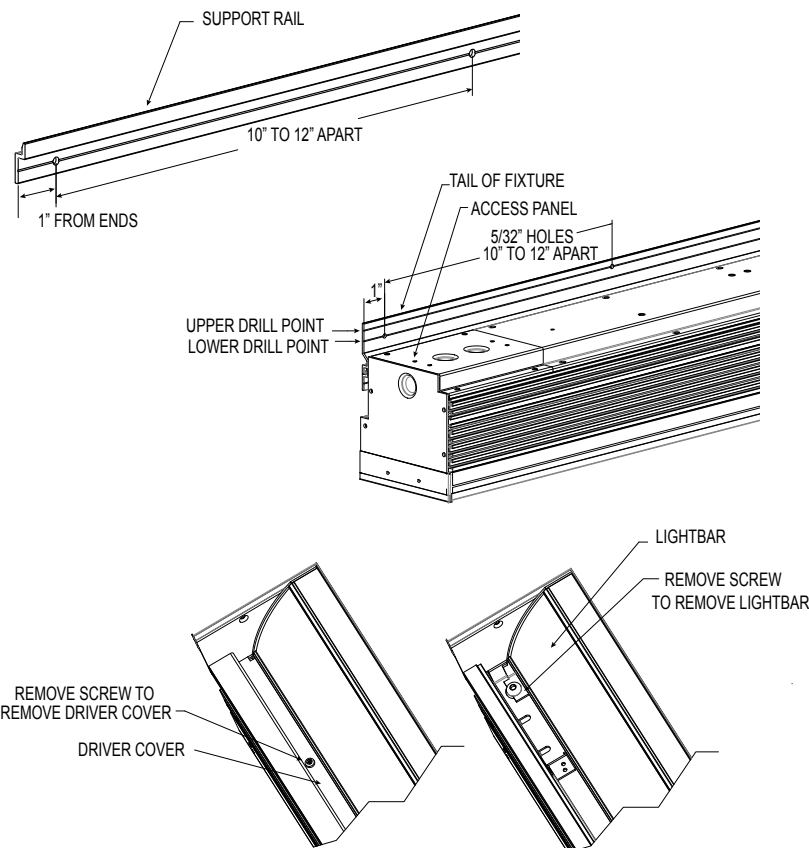
Additional support to structural member may be required. Check with local building codes for requirements

**820-00128**

V-0416

# INSTRUCTION SHEET

## Installation Guide/ Continuous Run



8. Hang next fixture on support rail.

9. Position alignment splines between fixtures.

10. Tighten captive screw on joiner bracket.

11. Tighten set screws on alignment splines.

12. Repeat previous steps 7-11 for additional fixtures.

13. Secure fixture to blocking with drywall screws.

14. Tighten T-Grid Clamps via 8-32 nuts to T-grid for proper alignment. Position them as high up as possible on the t-grid beam.

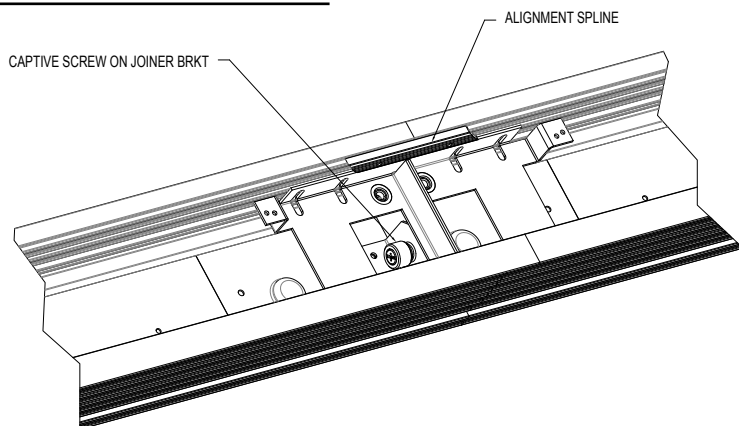
15. Use appropriate hanger wire (by others) through Hanger Bracket.

16. Locate access panel on back of fixture on each end. Bring conduit and conduit fitting (both by others) through back of fixture or end caps through provided 1/2" KO's. Wire line voltage to fixture according to provided wiring diagram.

Access panel can be temporarily removed to simplify wiring.

17. Re-install lightbar and driver cover.

### Continuous Run Connection



**Note:** To be installed by a qualified electrician per N.E.C. and all local codes.

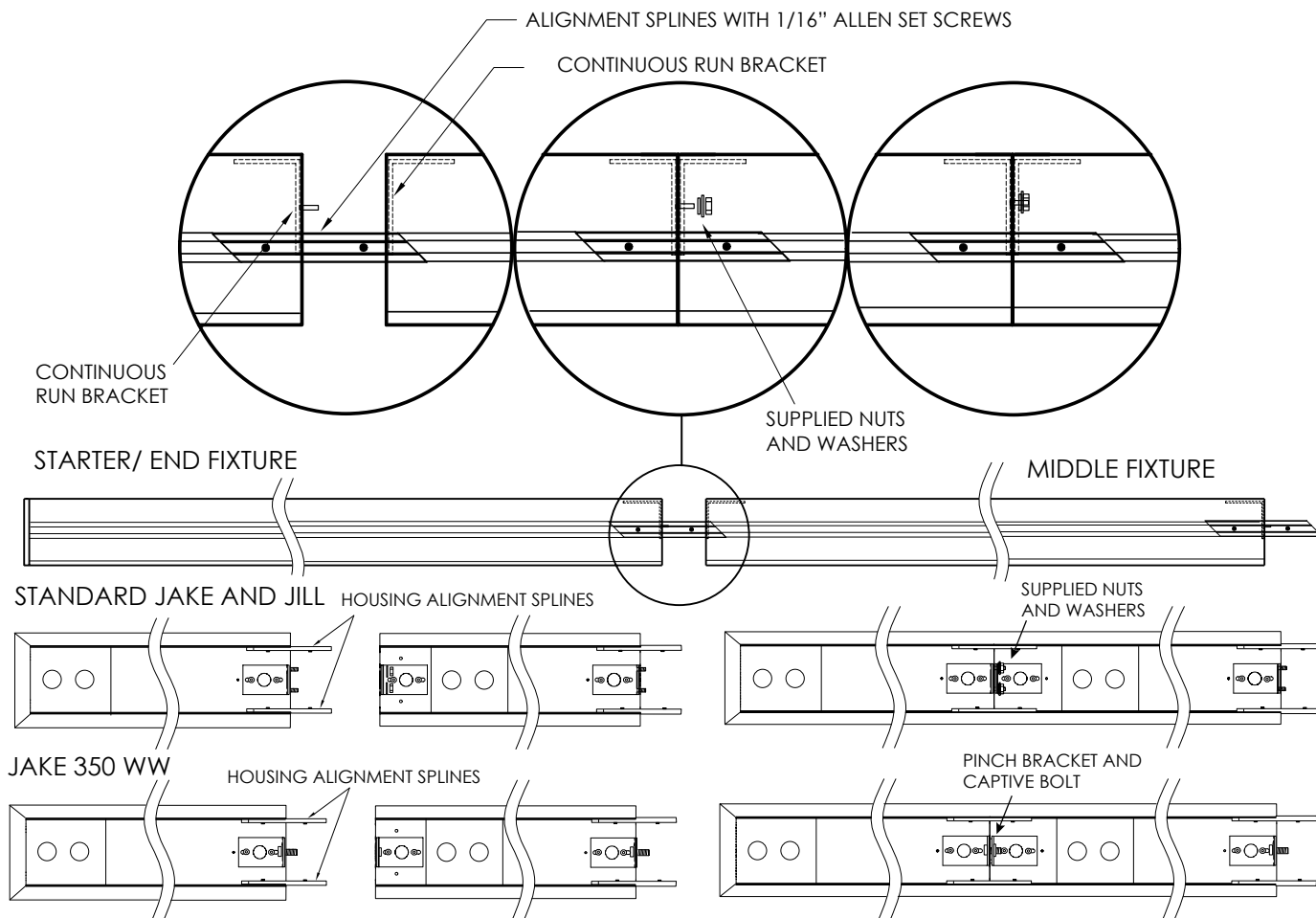
Additional support to structural member may be required. Check with local building codes for requirements

820-00128

V-0416

# INSTRUCTION SHEET

## Installation Guide



### Instructions

1. Connect power to starter fixture power supply.
2. Thru-wire to second fixture.
3. Slide open the end of the fixture over the starter fixture's continuous run housing alignment splines.
4. Standard JAKE/JILL - Line up holes on continuous run brackets. Secure with supplied #8 bolts, washers, and 11/32 nuts.  
JAKE 350 WW - Line up captive bolt with threaded bracket and tighten to suck sections together.  
(note: the internal "L" brackets should be set back approximately 1/16" from the edge of the fixture - tighten 1/16" allen set screws on alignment splines.
5. Continue steps 1-4 until run is completed, (same steps apply for end fixtures).
6. Standard JAKE/ JILL Install liner/ tray.  
350 WW install Light Bar and Driver cover.
7. Install lamp(s) if fluorescent
8. Install lens. (N/A in 350 WW)

**Note:** To be installed by a qualified electrician per N.E.C. and all local codes.

Additional support to structural member may be required. Check with local building codes for requirements

820-00115

V-0417