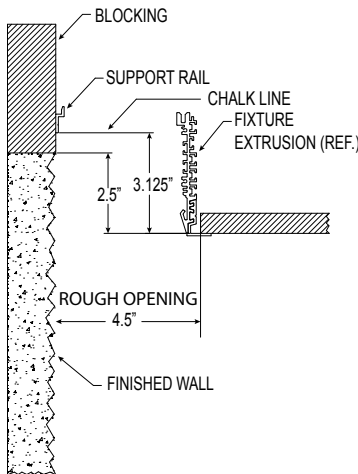


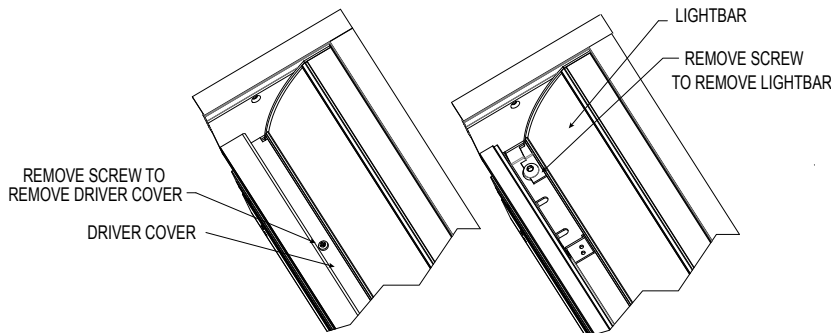
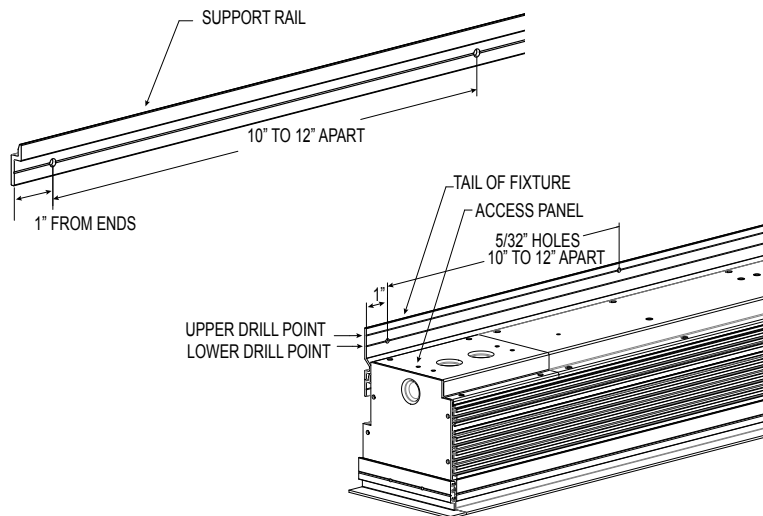
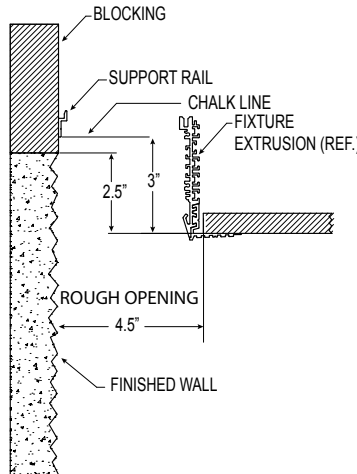
INSTRUCTION SHEET

Installation Guide

TRIM (TR)



TRIMLESS (TL)



Notes before installation: wall should have blocking above finished wall to attach support rail and fixture. Blocking should be flush with high point of textured wall. Access to fixture above the ceiling is required. If access is not feasible install the ceiling after fixture is installed. Additionally, trimless fixtures will be attached to ceiling by side blocking or backer flange. Trim fixtures will be attached to ceiling by side blocking or can be suspended by threaded rod. If side blocking is used, a 2x4 stud is needed directly above the ceiling adjacent to the fixture.

1. Mark a chalk line for positioning the bottom edge of the support rail. Note: correct position is based on trim option and ceiling type.
2. Prepare support rail(s) by drilling 5/32" diameter holes 1" from each end and every 10"-12" in between. Note: for continuous runs, position the seam between support rails in the middle of the fixture. If necessary, cut one support rail in half and use that half piece as the starter.
3. Prepare the fixture(s) by drilling 5/32" diameter holes on the tail of the fixture. Drill 1" from each end and every 10"-12" in between. Alternate between upper and lower drill points.
4. Remove driver cover and lightbar from fixture.
5. Mount support rail(s) to blocking with drywall screws.
6. Hang fixture on support rail.

Note: To be installed by a qualified electrician per N.E.C. and all local codes.

Additional support to structural member may be required. Check with local building codes for requirements

820-00123

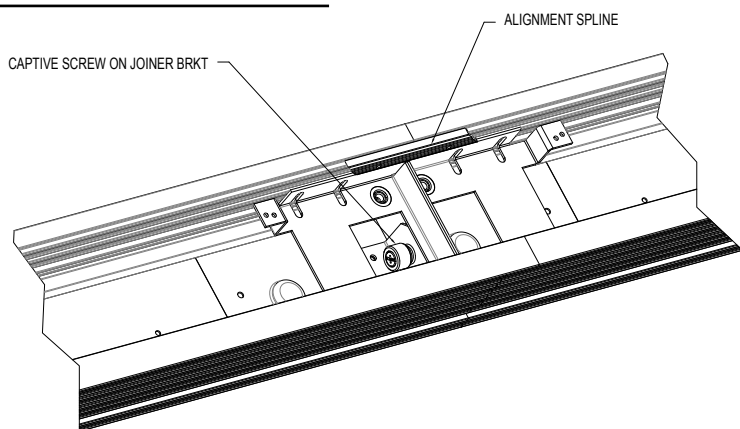
V-0416

INSTRUCTION SHEET

Installation Guide

Continuous Run

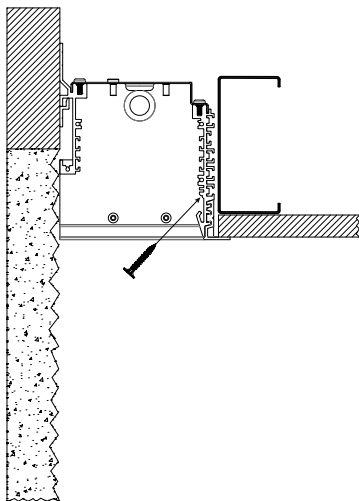
Continuous Run Connection



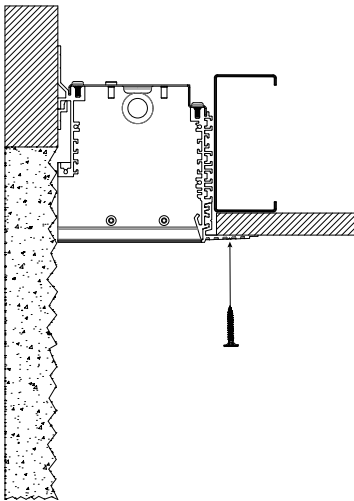
7. For stand alone fixtures skip to step 13. For continuous runs, install alignment splines in end of fixture (do not tighten setscrews yet).
8. Hang next fixture on support rail.
9. Position alignment splines between fixtures.
10. Tighten captive screw on joiner bracket.
11. Tighten set screws on alignment splines.
12. Repeat previous steps 7-11 for additional fixtures.
13. Secure fixture to blocking with drywall screws.
14. Connect 1/2" flex conduit to access panel (or endcap) and make wire connections. Access panel can be temporarily removed to simplify wiring.
15. Secure fixture to ceiling by side blocking, backer flange or threaded rod.
16. Re-install lightbar and driver cover.

MOUNTING OPTIONS

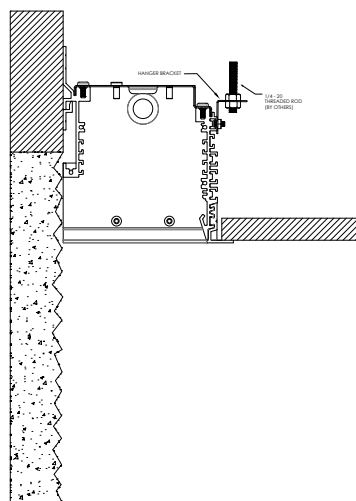
SIDE BLOCKING - TRIM (TR)



SIDE BLOCKING - TRIMLESS (TL)



HANGER BRACKET - TRIM (TR)



Note: To be installed by a qualified electrician per N.E.C. and all local codes.

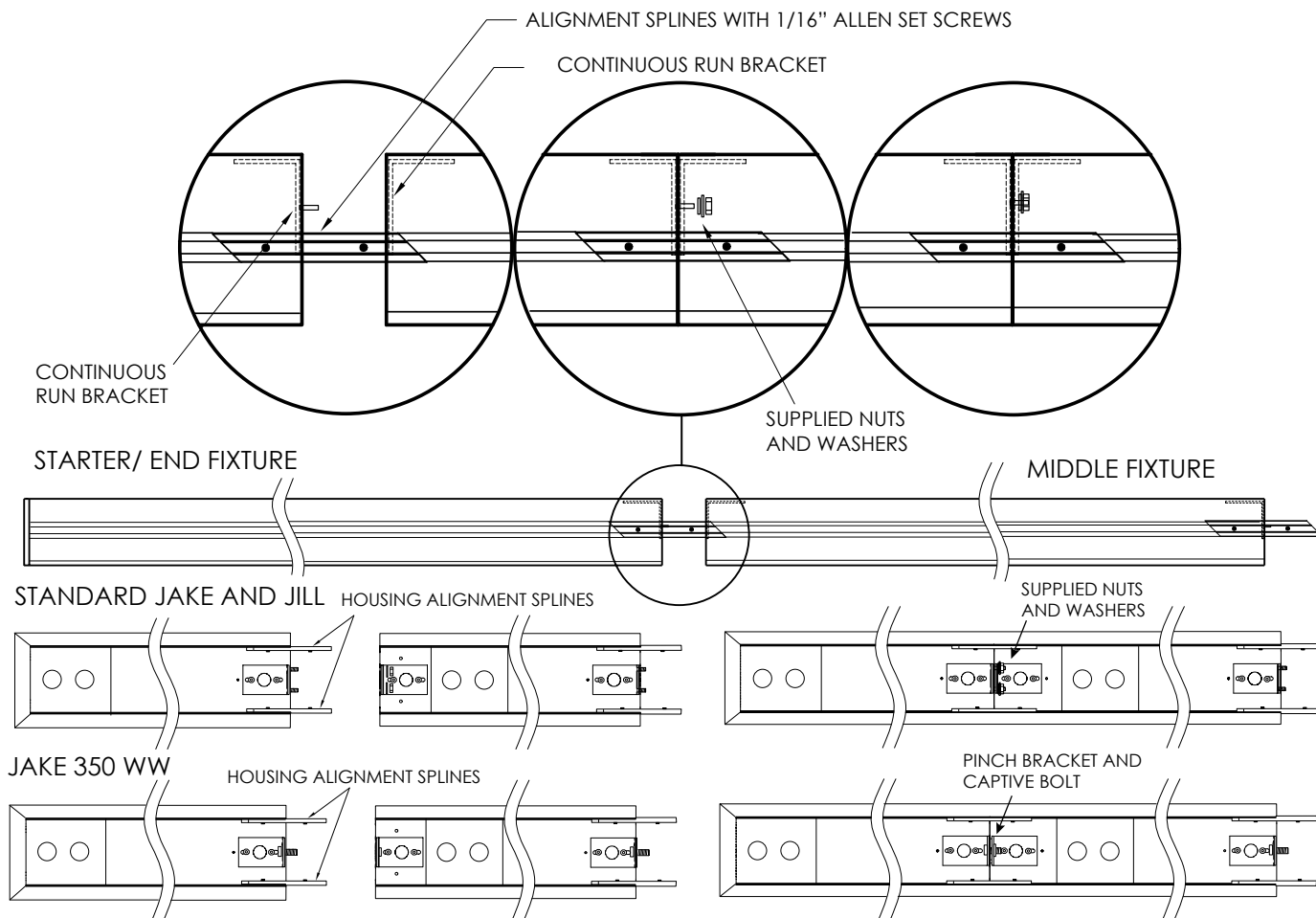
Additional support to structural member may be required. Check with local building codes for requirements

820-00123

V-0416

INSTRUCTION SHEET

Installation Guide



Instructions

1. Connect power to starter fixture power supply.
2. Thru-wire to second fixture.
3. Slide open the end of the fixture over the starter fixture's continuous run housing alignment splines.
4. Standard JAKE/JILL - Line up holes on continuous run brackets. Secure with supplied #8 bolts, washers, and 11/32 nuts.
JAKE 350 WW - Line up captive bolt with threaded bracket and tighten to suck sections together.
(note: the internal "L" brackets should be set back approximately 1/16" from the edge of the fixture - tighten 1/16" allen set screws on alignment splines.
5. Continue steps 1-4 until run is completed, (same steps apply for end fixtures).
6. Standard JAKE/ JILL Install liner/ tray.
350 WW install Light Bar and Driver cover.
7. Install lamp(s) if fluorescent
8. Install lens. (N/A in 350 WW)

Note: To be installed by a qualified electrician per N.E.C. and all local codes.

Additional support to structural member may be required. Check with local building codes for requirements

820-00115

V-0417