

## CUSTOM

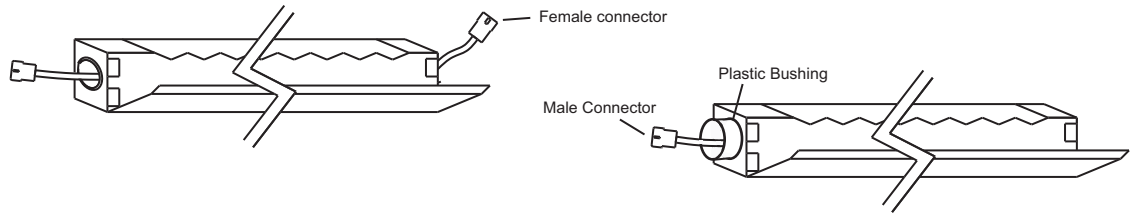
### QCS

#### QUICK CONNECT SYSTEM

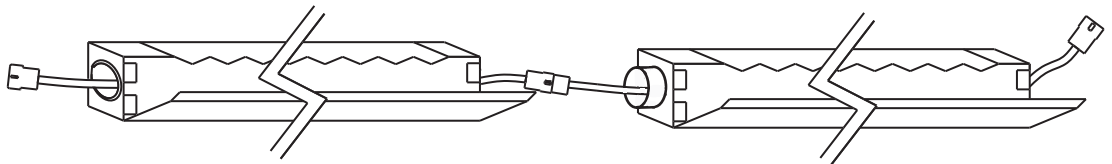
#### THROUGH WIRING INSTALLATION

- quick connect for factory supplied through wiring
- for ease of installation
- QCS is ideal for long runs of most Birchwood Lighting luminaires
- add "QCS" under the options section to specify this option for a particular fixture

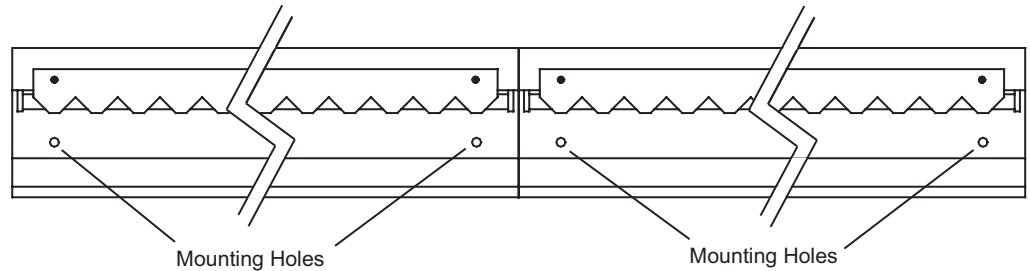
To provide the easiest installation possible for long runs, fixtures can be wired with a male and female end of our quick connect system.



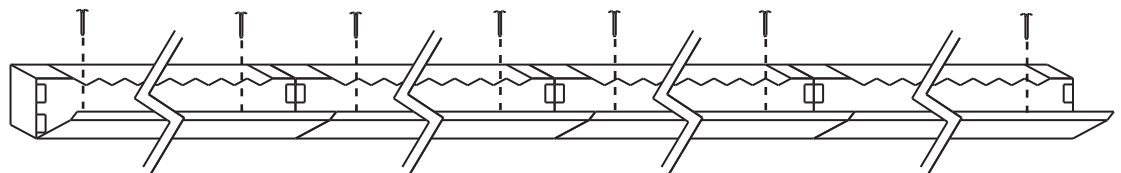
Place fixtures end-to-end. For each fixture in the run connect the male connector to the female connector ensuring that the plastic bushing fits into knock out of the adjacent fixture..



Ashley fixtures have mounting holes outside of the housing so that the fixture does not need to be dismantled to be installed.



Once fixtures are firmly placed end-to-end, screw down the run into the cove, soffit, or any other space the fixture is used in to ensure that the fixture will not move.



#### Job Information

Type

Job Name

Location

# BIRCHWOOD LIGHTING

714.550.7118 • fax 714.550.7151 • [www.BirchwoodLighting.com](http://www.BirchwoodLighting.com)

NOTE: Specifications and dimensions are subject to change without notice.

