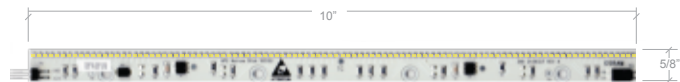


LIGHT ENGINE INFO

HF2N

Features and Benefits:

- Narrow 5/8" w board comprised with closely packed small LEDs
- High Lumen LED emitters with rated service life to 50,000 hours at 65 degrees Celsius.
- Boards available in 10" sections with 102 emitters and 4" section with 42 emitters.
- Continuous linear light distribution. 10 watts/ft. yielding 540 lumens/ft. (54 lumens/watt)
- End to end connection for various length fixtures and continuous run capabilities
- 120 degree beam angle
- Available in 3000K, 3500K and 4000K



HF2N *** 4" board also available

HF2N-H (half populated)

Features and Benefits:

- Narrow 5/8" w board comprised with closely packed small LEDs
- High Lumen LED emitters with rated service life to 50,000 hours at 65 degrees Celsius
- HF2N-H modules is half populated which in turn uses half the wattage and the operating temp is less than the fully population
- Boards available in 10" sections with 54 emitters and 4" section with 24 emitters.
- Continuous linear light distribution. 5 watts/ft. yielding 270 lumens/ft. (54 lumens/watt)
- End to end connection for various length fixtures and continuous run capabilities
- 120 degree beam angle
- Available in 3000K, 3500K and 4000K



HF2N-H (half populated) *** 4" board also available

HF2XB-S4

Features and Benefits:

- 7/8" w board comprised 4 LEDs
- High Lumen LED emitters with rated service life to 50,000 hours at 65 degrees Celsius.
- HF2XB-S4 modules come in 11.5" lengths with 4 emitters per module 3.9 watts/ft. yielding 225 lumens/ft. which is 58 lumens/watt
- 90 degree beam angle



HF2XB-S4

www.birchwoodlighting.com

1302 East Hunter Ave • Santa Ana, CA 92705 • P. 714.550.7118 • F. 714.550.7151

 BIRCHWOOD
lighting



HAILEY 125-HF2N-RAS LED



KELSEY 125-HF2N-H-CSS-R LED



DISPLAY 510-HF2XB-S4 LED

LED

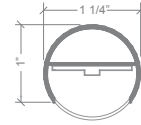
In our continual quest to bring cutting edge technology to the linear architectural lighting market, Birchwood Lighting is pleased to present the latest in our LED product offerings. Three new LED light engines can be paired up with numerous different aluminum extrusion shapes to provide the latest in LED lighting solutions for architectural and case lighting projects. The KELSEY and HAILEY 125 shapes can be used in task, accent, or general illumination applications. The DISPLAY shapes are the perfect solution for all varieties of showcase, under-shelf and display applications.

BENEFITS

- Three LED light engines to choose from with light output up to 540 lumens/ ft.
- The HF2N and HF2N-H high intensity boards offer high luminous intensity and, as a product of the tight emitter spacing, extremely consistent color output.
- The HF2XB-S4 has 4 LED emitters per 11 1/2" length providing a high luminous intensity with more of a point source distribution, perfect for display and case lighting.
- All three boards offer end to end connections for continuous light performance.

LED HOUSING OPTIONS

ARCHITECTURAL

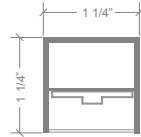


HAILEY 125

Applications:
Task, Accent, Cove, Edge, Under Shelf, Display/ Case

Mounting:
RAS, CSS, SM

Lens Options:
Satin Ice White
Satin Ice Clear



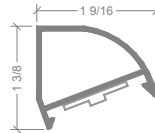
KELSEY 125

Applications:
Task, Accent, Cove, Edge, Under Shelf Display/ Case

Mounting:
RAS, CSS, SM

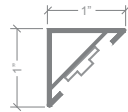
Lens Options:
Satin Ice White
Satin Ice Clear

DISPLAY



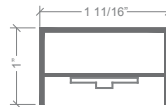
510 - QUARTER ROUND

Applications:
Accent, Cove, Edge, Under Shelf, Display/ Case



595 - ANGLED

Applications:
Accent, Cove, Edge, Under Shelf, Display/ Case



560 - LOW PROFILE RECTANGLE

Applications:
Accent, Cove, Edge, Under Shelf, Display/ Case

MOUNTING OPTIONS

