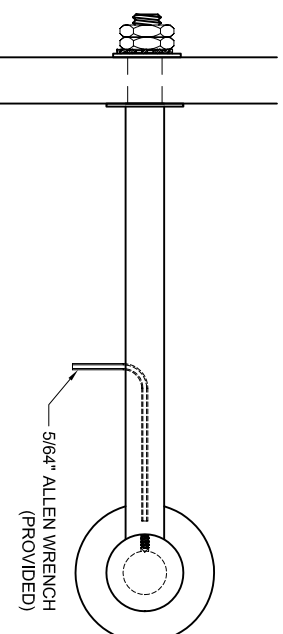
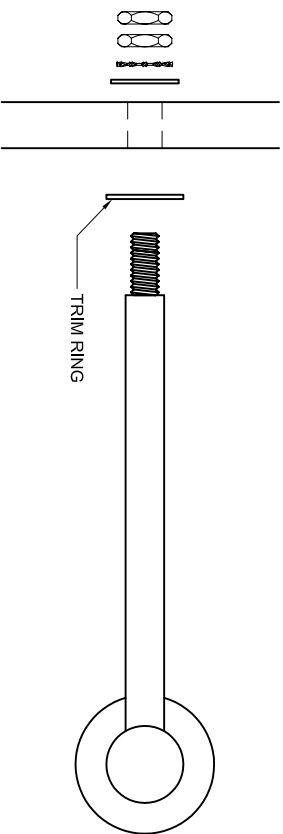
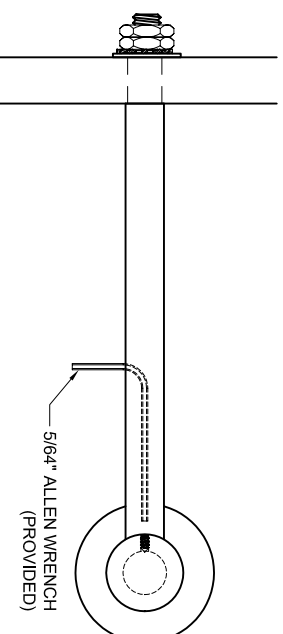
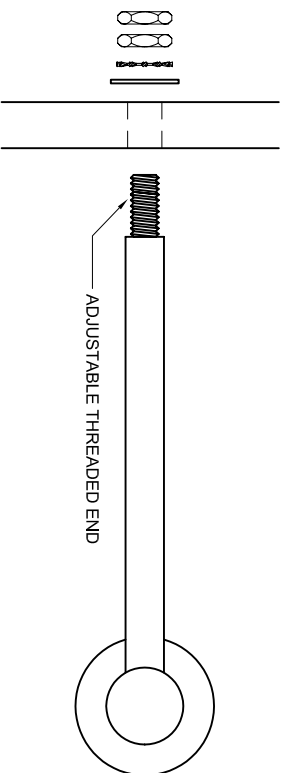


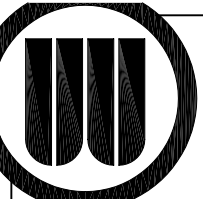
# RAB

## NO MOUNTING PLATE (NMP)- INSTALLATION INSTRUCTIONS



- 1) ALIGN FIXTURE ARMS AND TIGHTEN SET SCREWS (ENSURE ROTATION IS POSSIBLE (ARMS CAN BE ADJUSTED TO WHERE THE FIXTURE CANNOT ROTATE))
- 2) DRILL 33/64" OR 17/32" HOLES IN MOUNTING SURFACE - REFERENCE "FIXTURE SPACING" WORKSHEET FOR SPACING INFORMATION
- 3) IF USING TRIM RING SLIDE ONE OVER EACH ARM
- 4) ADJUST THREADED INSERTS TO APPROPRIATE DEPTH FOR WASHER AND TWO THIN NUTS
- 5) INSTALL FIXTURE - INSERT ADJUSTABLE THREADED ENDS THROUGH DRILLED HOLES
- 6) SLIDE ON FLAT WASHER AND STAR WASHER
- 7) SECURELY TIGHTEN WITH ONE OR TWO NUTS PER ARM - ONE MAY BE USED, BUT TWO ARE RECOMMENDED FOR THIS INSTALLATION
- 8) RUN WIRES PER CODE TO J-BOX OR BALLAST HOUSING AND COMPLETE WIRE MAKE-UP PER SUPPLIED WIRING DIAGRAM
- 9) USE ALLEN WRENCH TO LOOSEN FIXTURE AT ARM KNUCKLES
- 10) ADJUST FIXTURE AS DESIRED AND TIGHTEN SET SCREWS TO SECURE IN PLACE - FIXTURE MAY BE LEFT LOOSE FOR ADJUSTMENT IF DESIRED

\*CONTACT FACTORY WITH ANY QUESTIONS



BIRCHWOOD LIGHTING, INC.  
1302 E. HUNTER AVE.  
SANTA ANA, CA 92705  
PHN: 714.550.7118  
FAX: 714.550.7151

RAB - MOUNTING INSTRUCTIONS - NMP